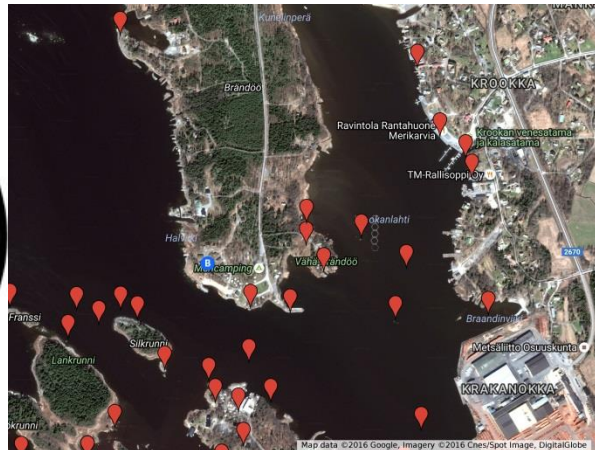


Mapping the Immaterial Cultural Heritage of Fishermen in and around the Bothnian Sea National Park in Finland

The Association of the Friends of the Bothnian Sea National Park

Lasse Lovén, vice chairman

6.5.2018



Information for the EUROPARC projects on the European Day of National Parks in 24.5.2018 and the European Year of Cultural Heritage 2018

An Integrated Project Cluster focusing on the Immaterial Fishing Culture in the West Coast of Finland: Collection and the refining of the immaterial fishing heritage in and around the Bothnian Sea National Park as a content for nature interpretation and cultural tours.

Partners: The Association of the Friends of the Bothnian Sea National Park, Metsähallitus – Parks and wildlife Finland, The Association of Cultural Heritage in Merikarvia Municipality, and the associations of fishermen.

Head of the project: Lasse Lovén, email lasse.loven@gmail.com

Key products: Three public geographical information layers on the Google Maps satellite imagery. Public electrical interpretation reports in pdf-format in the home page of the Association of the Friends of the Bothnian Sen national Park.

link: <http://www.selkamerenystavat.fi/joomla/index.php/design3/17-hankkeet/hankkeet-2/68-nyt-o-hanke-2>

Phase 1. Realized in 2014-15 in a project partially financed by the European Funds for Regional Development.

The Local Place Names of Viasvedenlahti-Säppi Sea Area

The local place names in the language of the local fishermen.

217 names and sites.

Link: <https://drive.google.com/open?id=11Bty-Pj9xClNd3ipe0fBl9ampo&usp=sharing>

Phase 2. Realized in 2016-17 in a project partially financed by the EU/LEADER program

The Fisheries of the Marine Fishermen in Merikarvia Municipality

For the joy and benefit of all the fishermen and others at sea. The traditional place names used by the fishermen of Merikarvia and the stories about them both in the local dialect and in the standard language. Material from "The Dictionary of Marine Fishermen" -project by EU/LEADER. Produced by The Friends of Bothnian Sea NP and The Merikarvia Cultural Heritage Association.

About 1000 sites, coordinates and stories.

Link: <https://drive.google.com/open?id=1LYm31fKkMXPZXAQL5g7niBxo-0&usp=sharing>

Phase 3. Realized in 2017-18 in a project partially financed by the EU/LEADER program

Shores of Hundred Islands in Merikarvia Municipality

This map is published especially people on boating and canoeing trips should find interesting destinations from it. The map presents over hundred destinations with the traditional names given to them by the fishermen of Merikarvia as well as the stories related to those places. The map refines the cultural heritage of fishermen collected originally for "The Dictionary of Marine Fishermen" - project by EU/LEADER.

The yellow squares mark the starting points and places where you can launch your boat or canoe. The blue drops represent good and interesting places for landing and servicing. The red drops mark the places of interest such the ones with stories or special glacial boulders. The sea routes are marked approximately. A responsible explorer does not disturb birds during their nesting time and he respects the privacy of the cottage owners. He also takes back with him all the stuff he has brought out to the sea.

The map has been produced with a partial financing from a EU/LEADER program, which aimed at developing the countryside to honor the Centennial of Finland (in 2017) and the vulnerable cultural heritage of marine fishermen. The descriptions and the images of the destinations have been produced by The Friends of Bothnian Sea NP and The Merikarvia Cultural Heritage Association.

133 sites and stories, about 400 images

Link: https://drive.google.com/open?id=1A_PCFfJ0R-GJimIPEFBwrVoFs0s&usp=sharing